

# APT. THREE

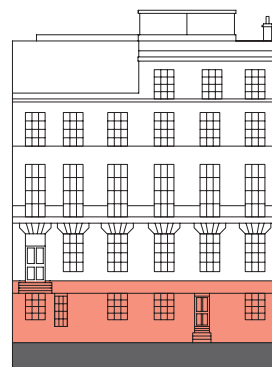
Two Bedroom | Lower Ground Floor

Total Area: 115.9m<sup>2</sup> (1,247ft<sup>2</sup>)

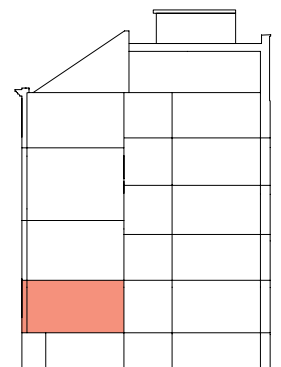
3 Cellar Stores: 22.1m<sup>2</sup> (238ft<sup>2</sup>)

Cellar Office: 12.3m<sup>2</sup> (132ft<sup>2</sup>)

North



Front elevation



Section elevation

## KEY

- S Storage
- W Wardrobe
- U Utility
- ▶ Entrance

Kitchen	4.20m x 2.37m	(13'9" x 7'9")
Living/Dining	5.93m x 5.65m	(19'6" x 18'7")
Bedroom 1	7.79m x 2.92m	(25'7" x 9'7")
Bedroom 2	3.30m x 4.29m	(10'10" x 14'1")
Bathroom	2.90m x 2.40m	(9'6" x 7'10")
Ceiling height	2.4m	(7'10")