

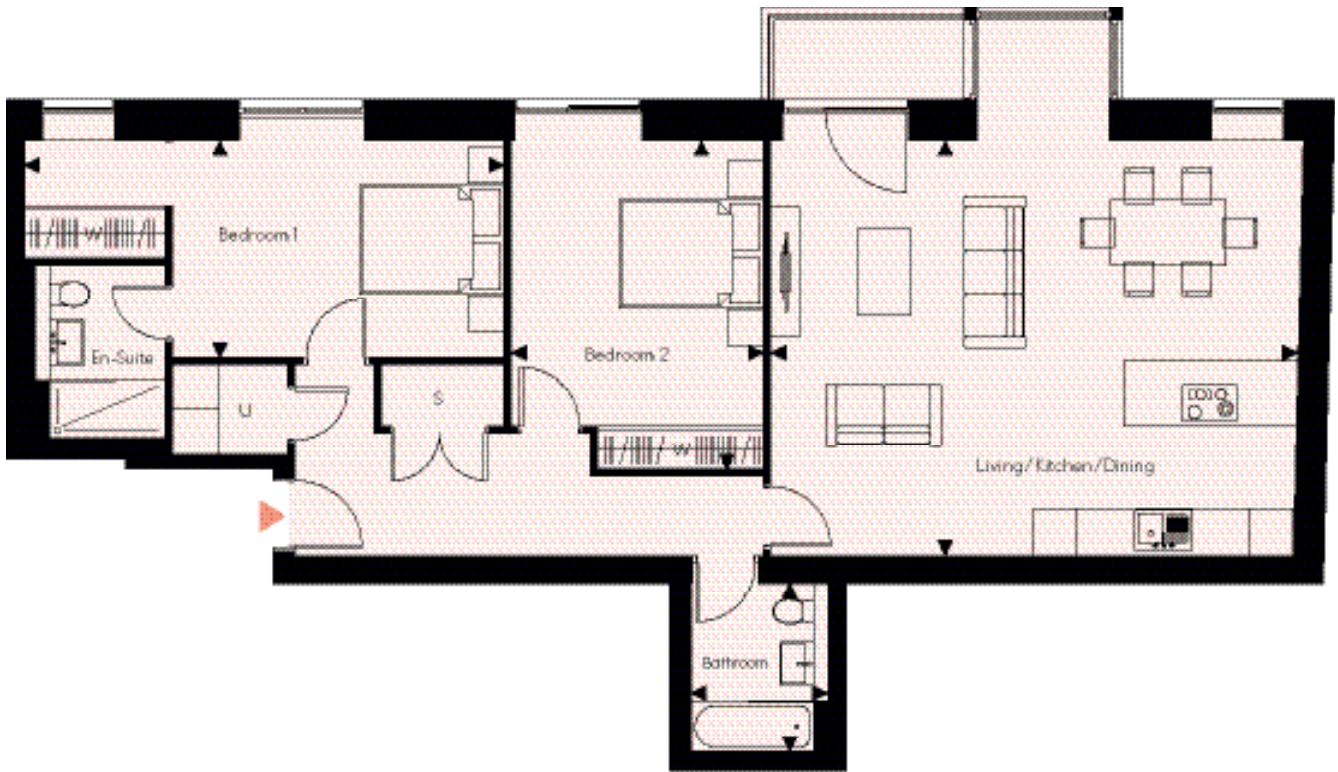
APT. FOUR

Two Bedroom | Ground Floor

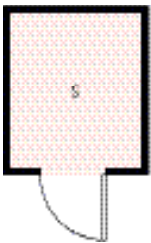
Total Area: 104.4m² (1,123ft²)

Basement Store: 4m² (43ft²)

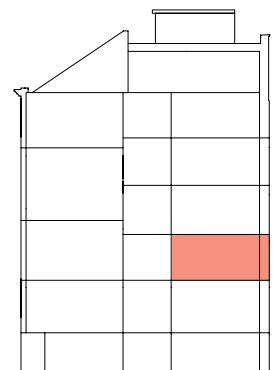
North



BASEMENT STORE



Rear elevation



Section elevation

KEY

- S Storage
- W Wardrobe
- U Utility
- ▶ Entrance

Kitchen/Living/Dining	7.31m x 5.76m	(24'0" x 18'11")
Bedroom 1	6.66m x 3.01m	(21'10" x 9'11")
Bedroom 2	3.50m x 4.56m	(11'6" x 15'0")
Bathroom	1.90m x 2.35m	(6'3" x 7'9")
Ceiling height	2.4m	(7'10")