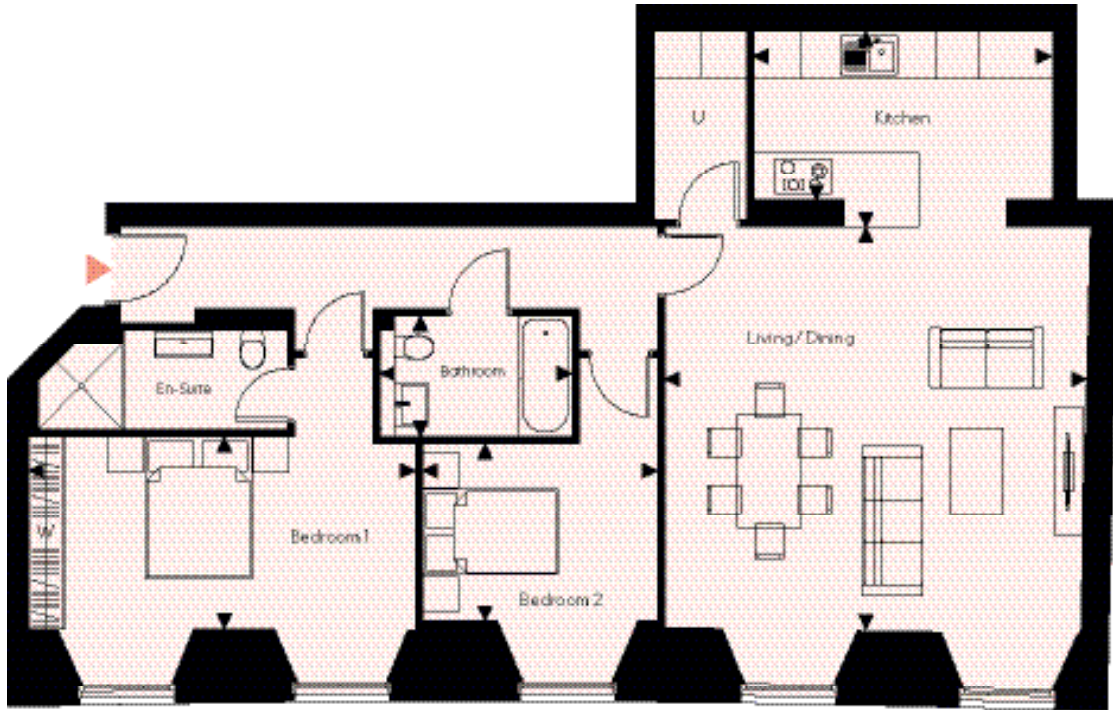


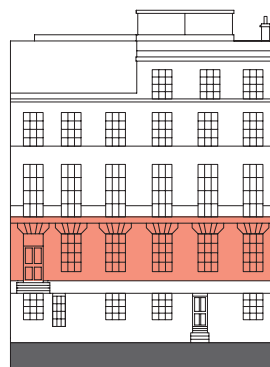
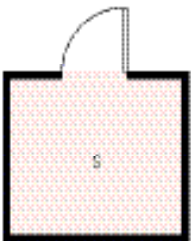
APT. FIVE

Two Bedroom | Ground Floor
 Total Area: 102.9m² (1,107ft²)
 Basement Store: 4m² (43ft²)

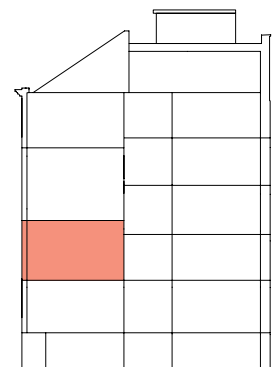
North



BASEMENT STORE



Front elevation



Section elevation

KEY

- S Storage
- W Wardrobe
- U Utility
- ▶ Entrance

Kitchen	4.20m x 2.76m	(13'9" x 9'0")
Living/Dining	5.93m x 5.65m	(19'6" x 18'7")
Bedroom 1	5.43m x 2.70m	(17'10" x 8'10")
Bedroom 2	3.30m x 2.49m	(10'10" x 8'2")
Bathroom	2.70m x 1.70m	(8'10" x 5'7")
Ceiling height	2.7m	(8'10")