

APT. SIX

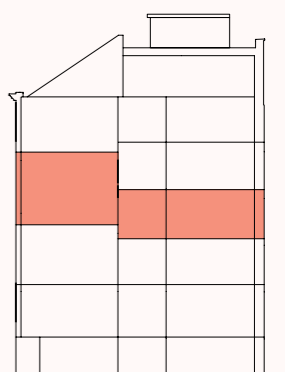
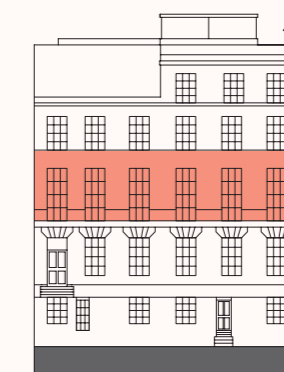
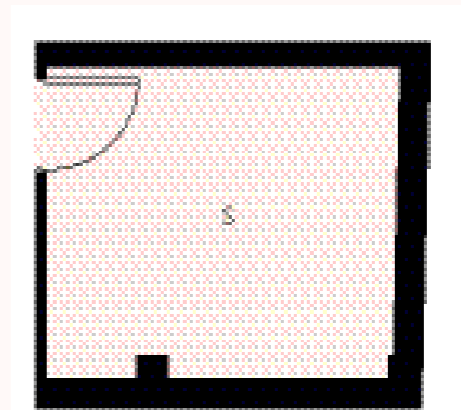
Three Bedroom | First Floor
 Total Area: 223m² (2,400ft²)
 Basement Store: 11.5m² (124ft²)

KEY

○ North

- S Storage
- W Wardrobe
- ▶ Entrance

BASEMENT STORE



Front elevation

Kitchen/Dining	8.66m x 4.18m	(28'0" x 13'9")
Living	8.22m x 5.69m	(27'0" x 18'8")
Bedroom 1	7.32m x 3.47m	(24'0" x 11'5")
Bedroom 2	6.66m x 3.01m	(21'10" x 9'11")
Bedroom 3	3.50m x 4.56m	(11'6" x 15'0")
Bathroom	1.85m x 2.35m	(6'1" x 7'9")
Pantry	1.25m x 2.50m	(4'1" x 8'2")
Basement Store	3.59m x 3.20m	(11'9" x 10'6")
Ceiling height	3m (Living & Kitchen)	(9'10")
	2.4m (Bedrooms)	(7'10")