

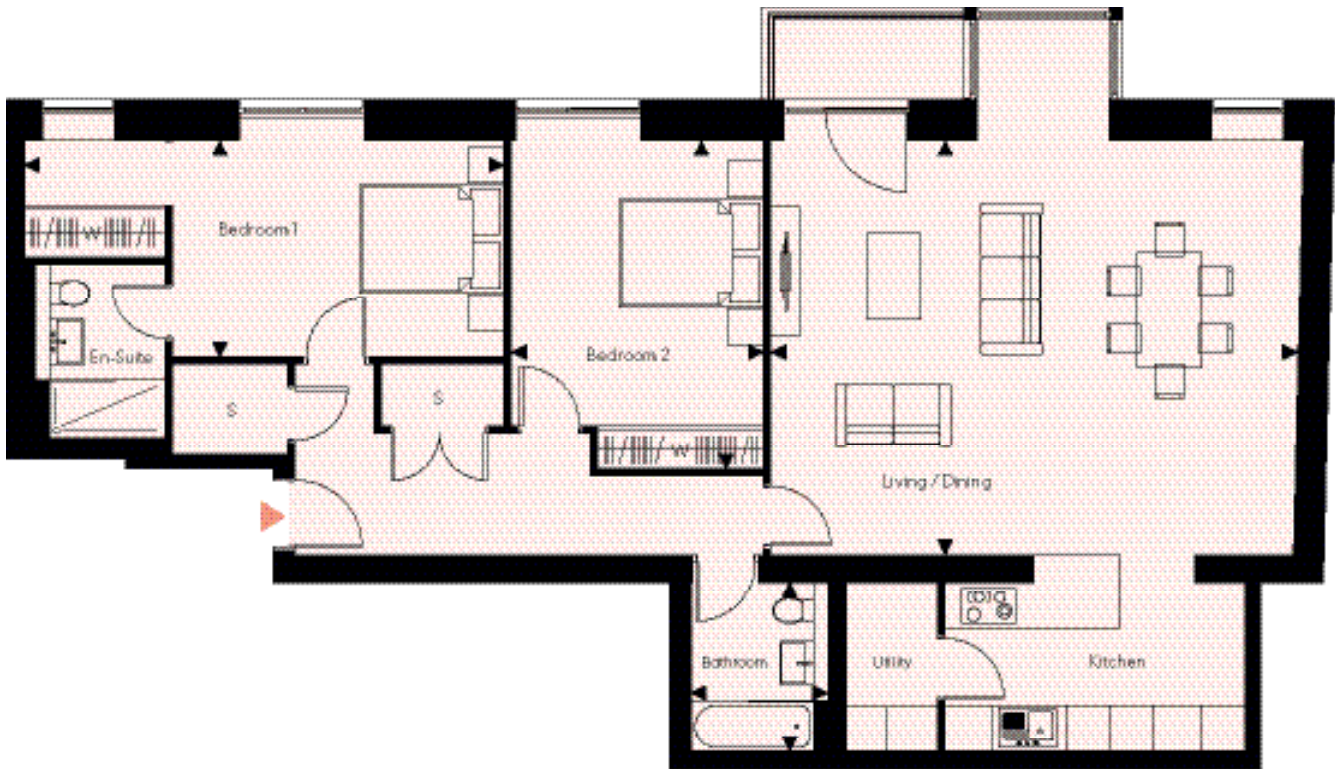
APT. SEVEN

Two Bedroom | Mezzanine Floor

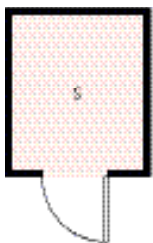
Total Area: 125.0m² (1,345ft²)

Basement Store: 4m² (43ft²)

North

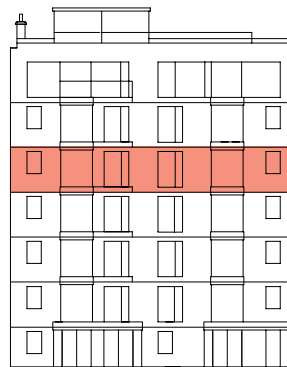


BASEMENT STORE

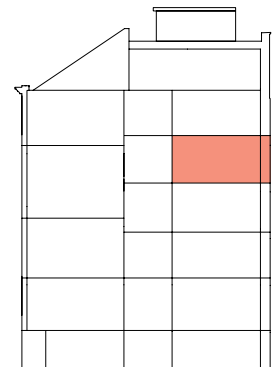


KEY

- S Storage
- W Wardrobe
- U Utility
- ▶ Entrance



Rear elevation



Section elevation

Living/Dining	7.31m x 5.76m	(24'0" x 18'11")
Bedroom 1	6.66m x 3.01m	(21'10" x 9'11")
Bedroom 2	3.50m x 4.56m	(11'6" x 15'0")
Bathroom	1.90m x 2.35m	(6'3" x 7'9")
Ceiling height	2.4m	