

APT. EIGHT

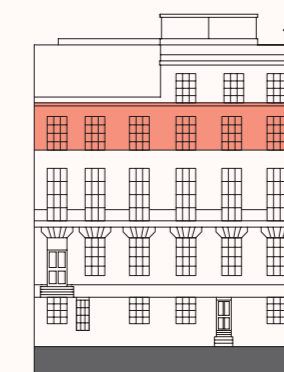
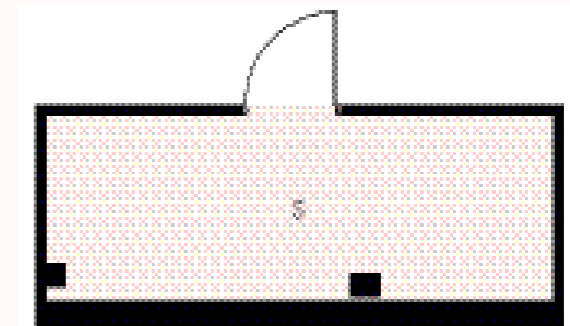
Three Bedroom | Second Floor
 Total Area: 218m² (2,346ft²)
 Basement Store: 9.8m² (105ft²)

KEY

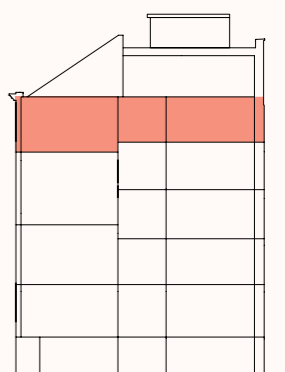
○ North

- S Storage
- W Wardrobe
- ▶ Entrance

BASEMENT STORAGE



Front elevation



Section elevation

Kitchen/Dining	8.66m x 4.18m	(28'0" x 13'9")
Living	8.22m x 5.69m	(27'0" x 18'8")
Bedroom 1	7.32m x 3.47m	(24'0" x 11'5")
Bedroom 2	6.66m x 3.01m	(21'10" x 9'11")
Bedroom 3	3.50m x 4.56m	(11'6" x 15'0")
Bathroom	1.85m x 2.35m	(6'1" x 7'9")
Pantry	1.25m x 2.50m	(4'1" x 8'2")
Basement Store	5.17m x 1.90m	(16'11" x 6'3")
Ceiling height	3m (Living & Kitchen)	(9'10")
	2.4m (Bedrooms)	(7'10")